



New Road, London, E4

BUTLER & STAG



LET AGREED, SIMILAR ALWAYS REQUIRED
 A spacious four/five bedroom semi-detached house located within walking distance of Chingford Mount and an excellent selection of good schools.

On the ground floor accommodation comprises of a formal lounge, dining room, kitchen/ breakfast room, study and bathroom. The first floor hosts four bedrooms and a family bathroom.

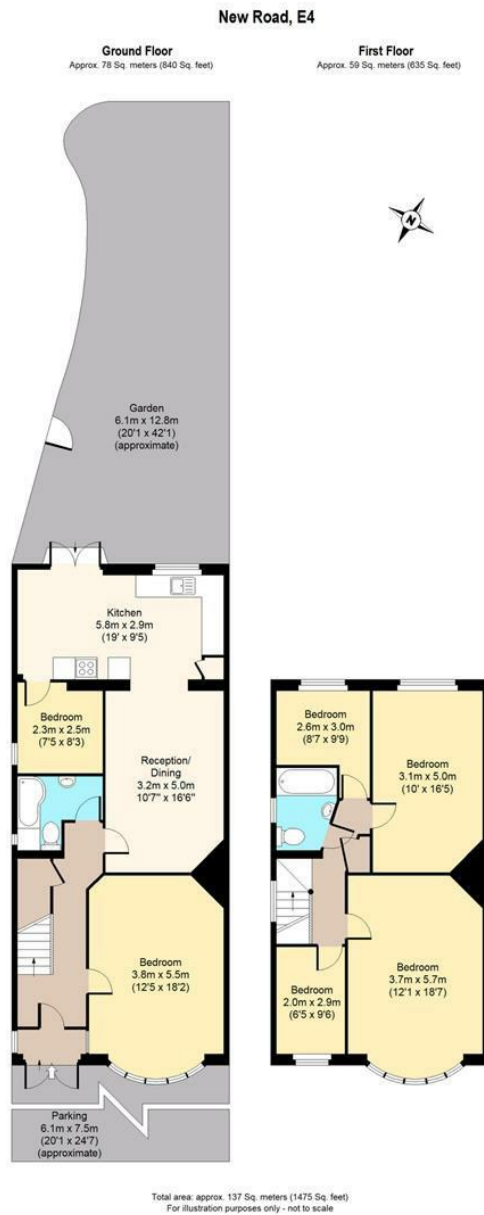
Externally, there is off street parking to the front for one/ two cars and a south westerly facing garden.



- Family House
- Four Bedrooms/ Two Bathrooms
- Generous Living Space
- Off Street Parking
- Close to Transport & Amenities
- South West Facing Garden







BUTLER & STAG

☎ 01992 667666

🏠 4 Forest Drive, Theydon Bois, Essex, CM16 7EY

✉ theydon@butlerandstag.com

www.butlerandstag.uk

IMPORTANT NOTICE - These particulars have been prepared in good faith and they are not intended to constitute part of an offer or contract. We have not performed a structural survey on this property and the services, appliances and specific fittings have not been tested. All photographs, measurements, floor plans and distances referred to are given as a guide and should not be relied upon.